



# impressora

[www.impressora.co.uk](http://www.impressora.co.uk)



## Custom Profile Install Instructions

This document is a step by step guide to installing the .icc and .am1 files onto your Mac or PC in order to use the custom profiles for your Canon large format printer.



# impressora

[www.impressora.co.uk](http://www.impressora.co.uk)

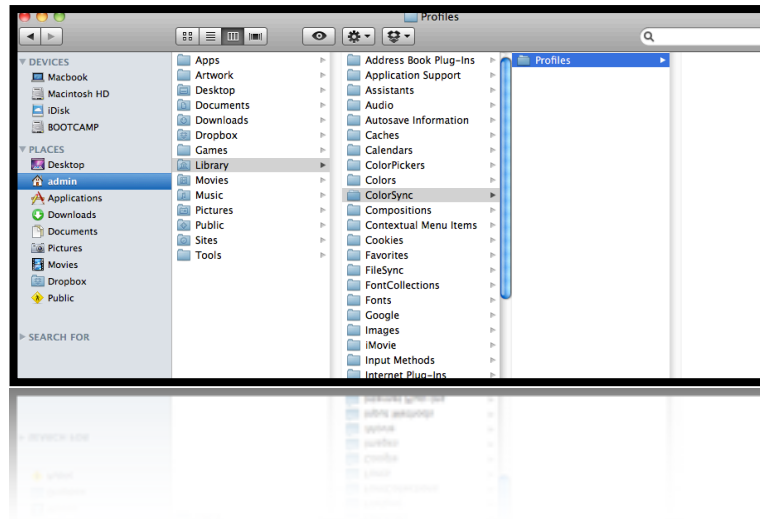
# .icc

## How To - Install iCC File

How to install '.icc' files onto PC & Mac operating systems

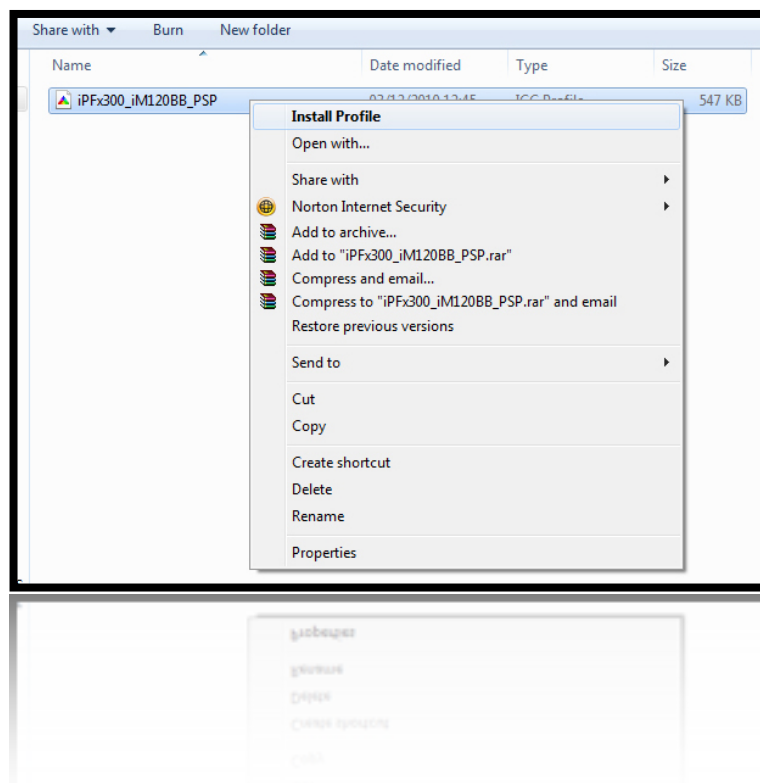
## Mac Users

Manually drag and drop the profile (file with the .icc extension) into the following location: **HD/User/Library/ColorSync/Profiles**



## PC Users

Right click on the profile (file with the .icc extension) then left click on “**Install Profile**”.





**impressora**

[www.impressora.co.uk](http://www.impressora.co.uk)

**.am1**

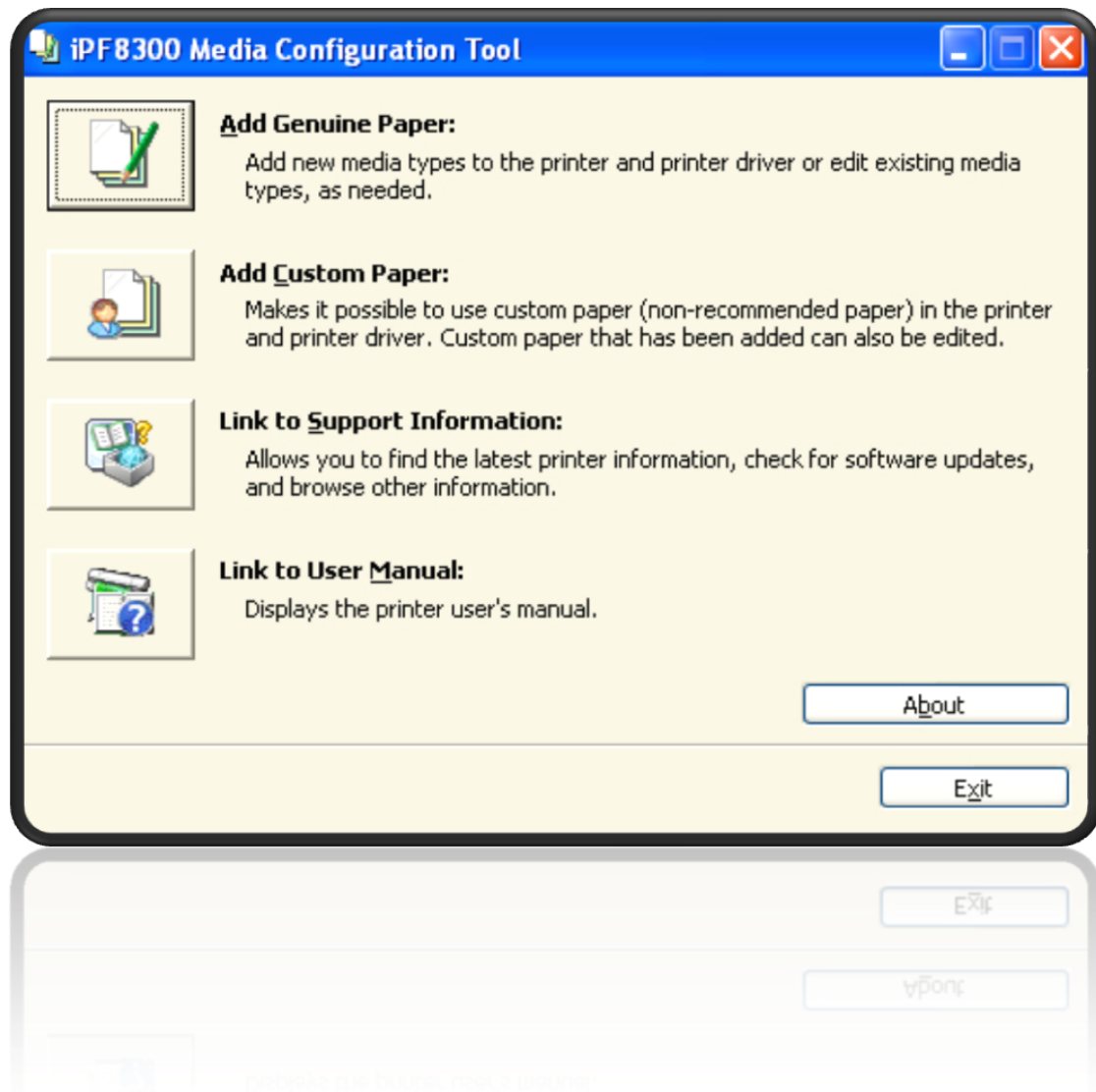
## How To - Install AM1 File

How to install custom media names into your Canon large format printer



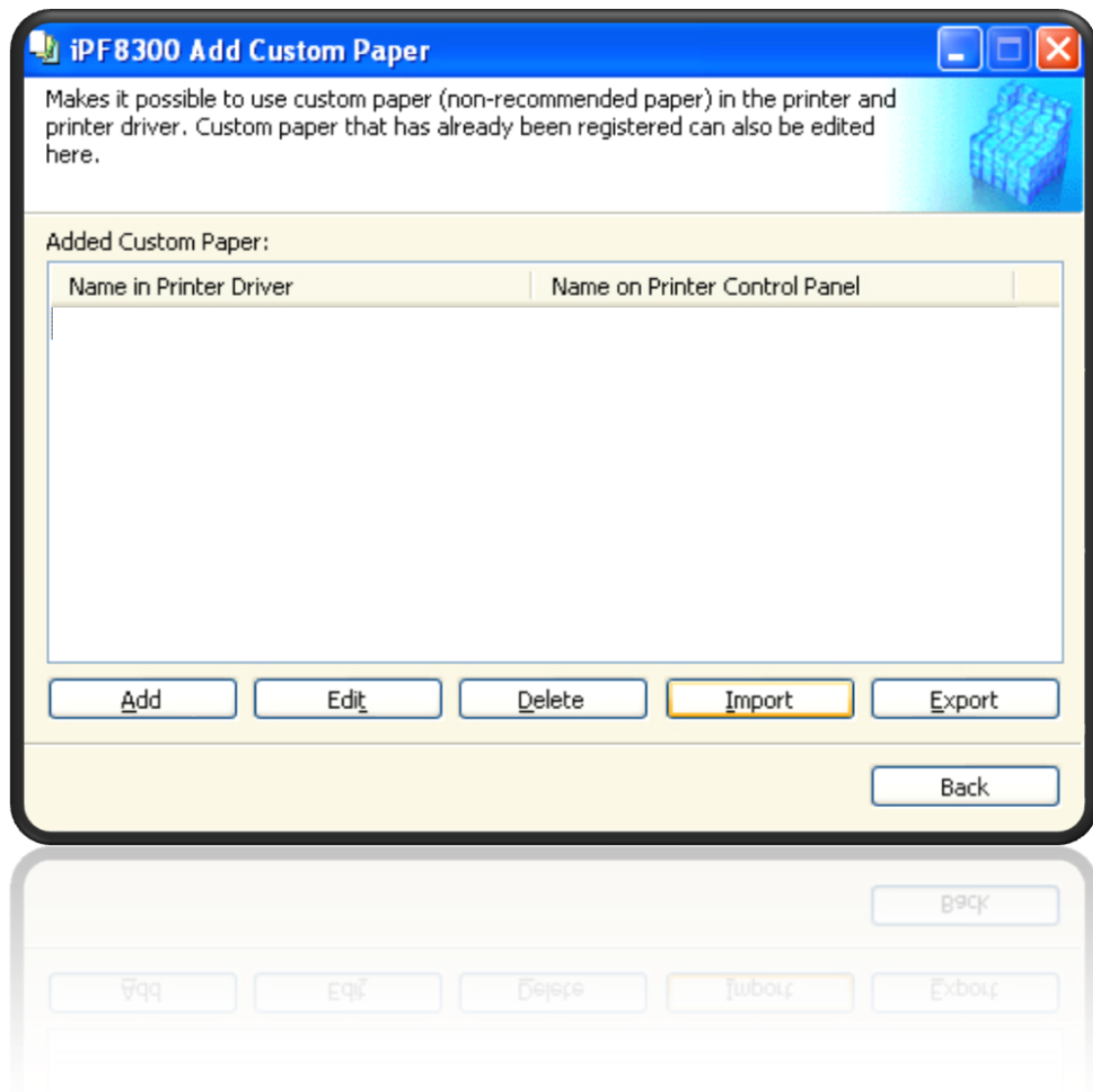
## Step 1

To begin the process of importing a custom media type, open the Media Configuration Tool and choose the “Add Custom Paper” option.



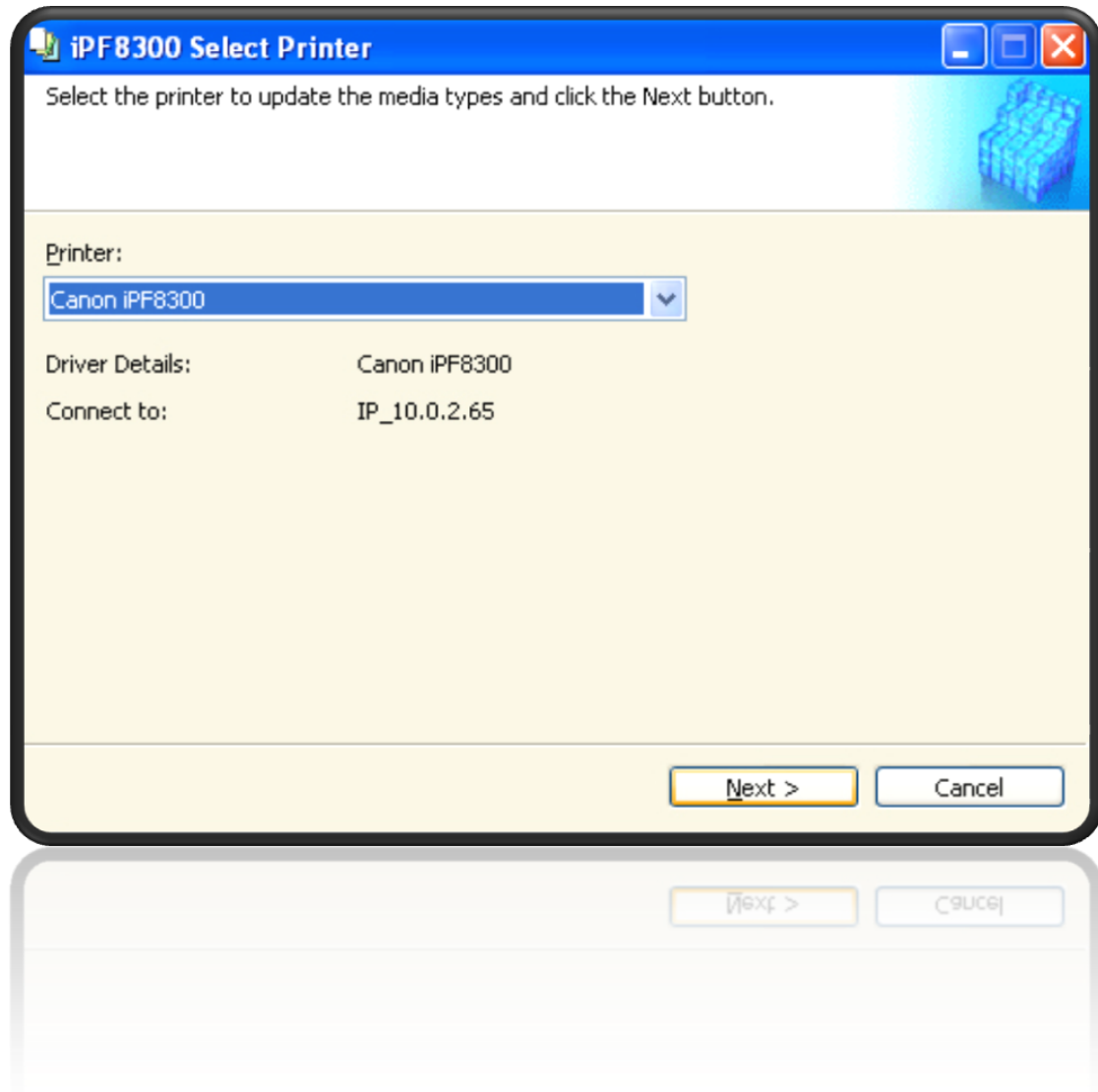
## Step 2

Choose the “**Import**” option.



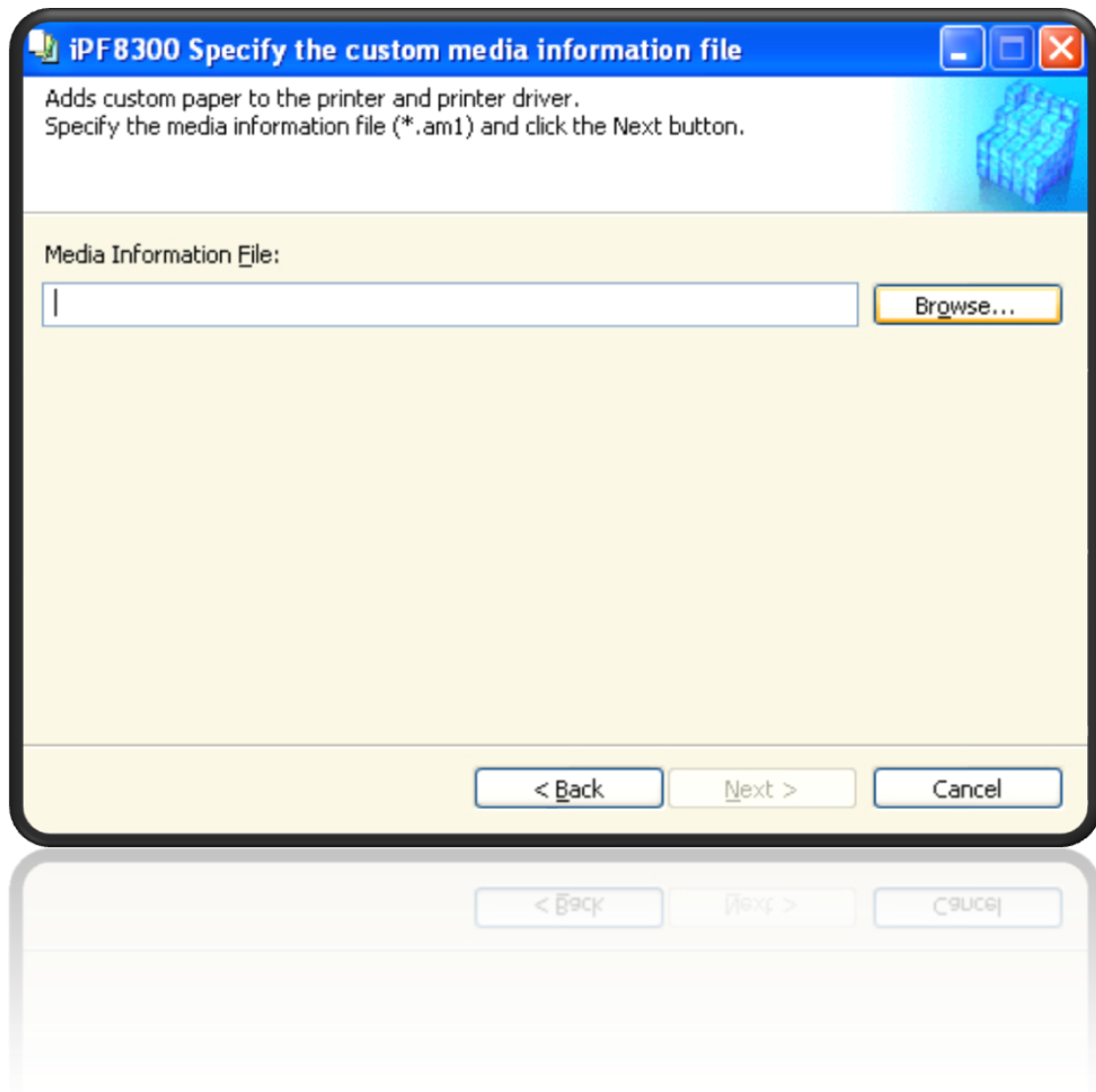
## Step 3

The Media Configuration Tool will ask you to choose the printer where you want to install the media type.



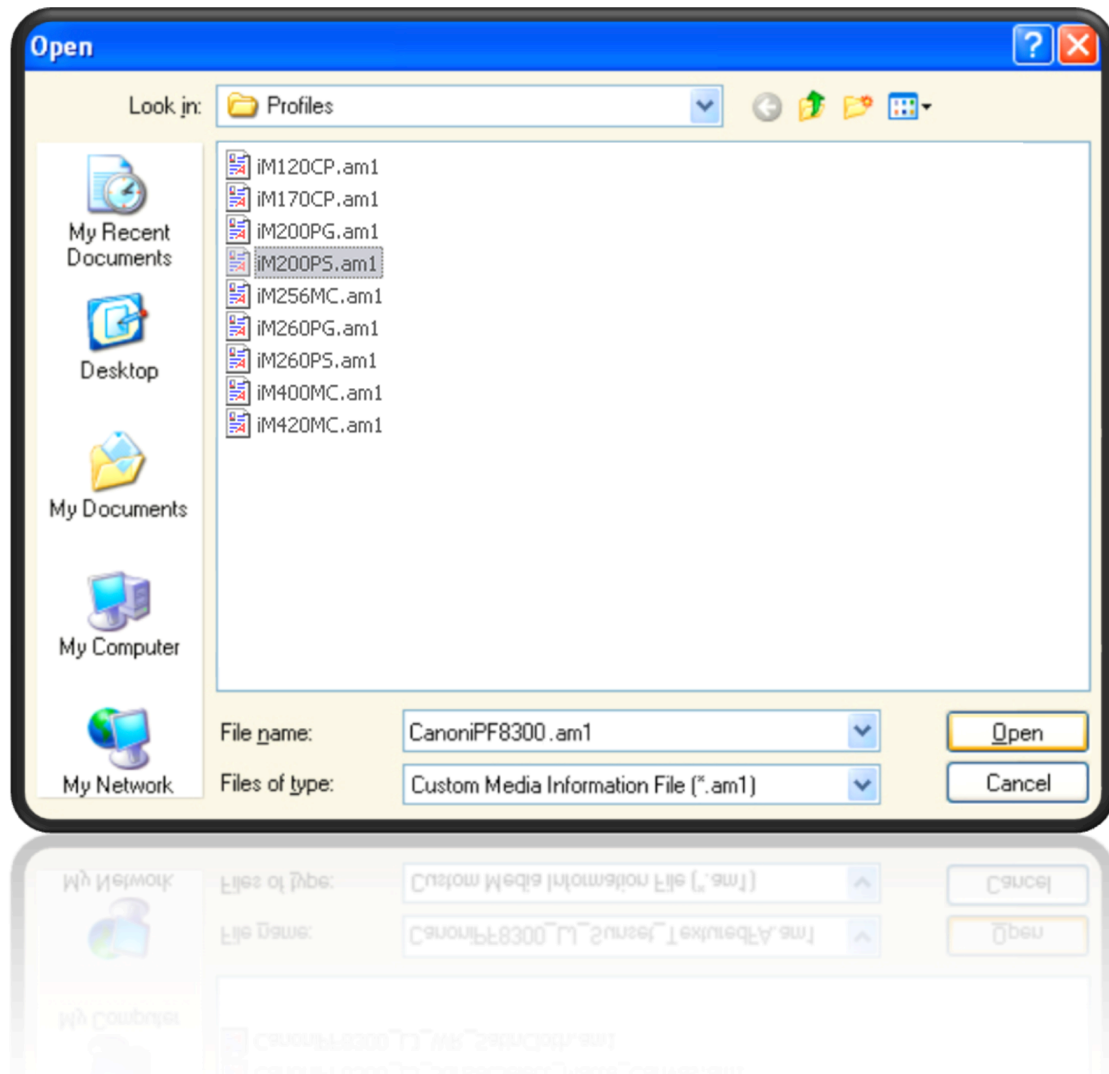
## Step 4

You will now need to point to the file which contains the custom media type. Click the browse button and navigate to the location where you have the file saved (it will be a **.am1** file).



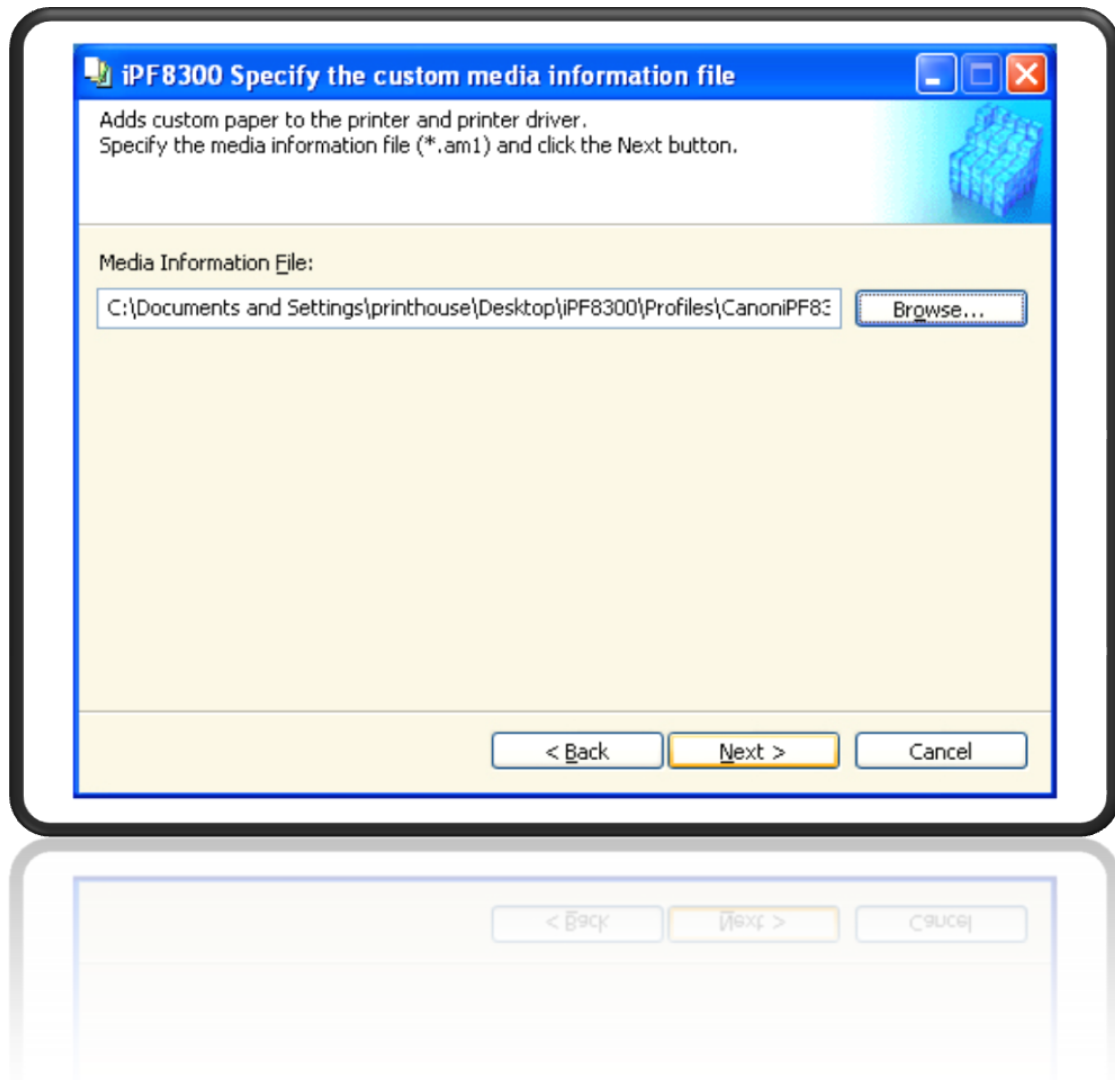
## Step 5

Choose the file and click “**Open**”.



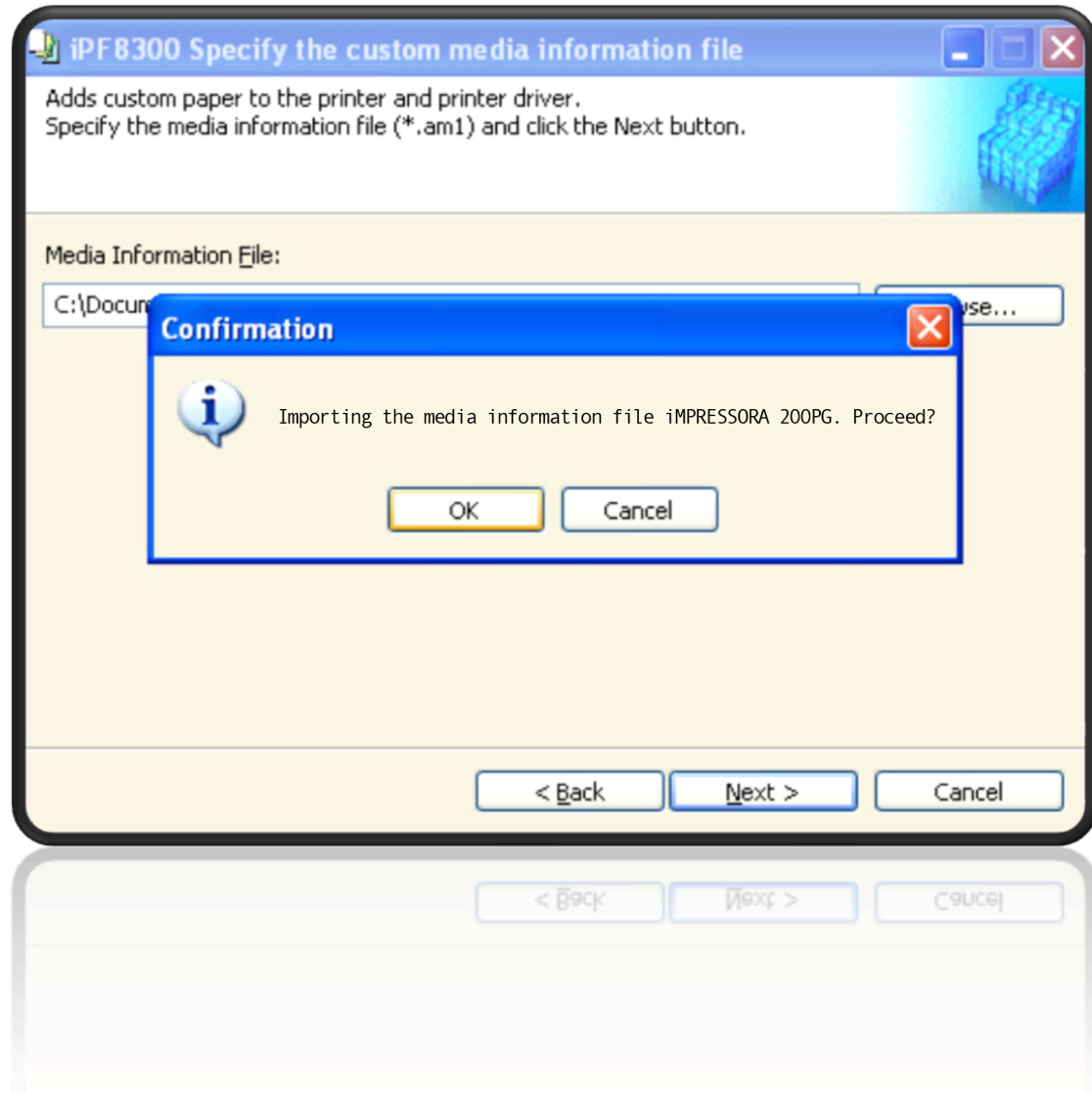
## Step 6

Choose “**Next**” to proceed with importing the file.



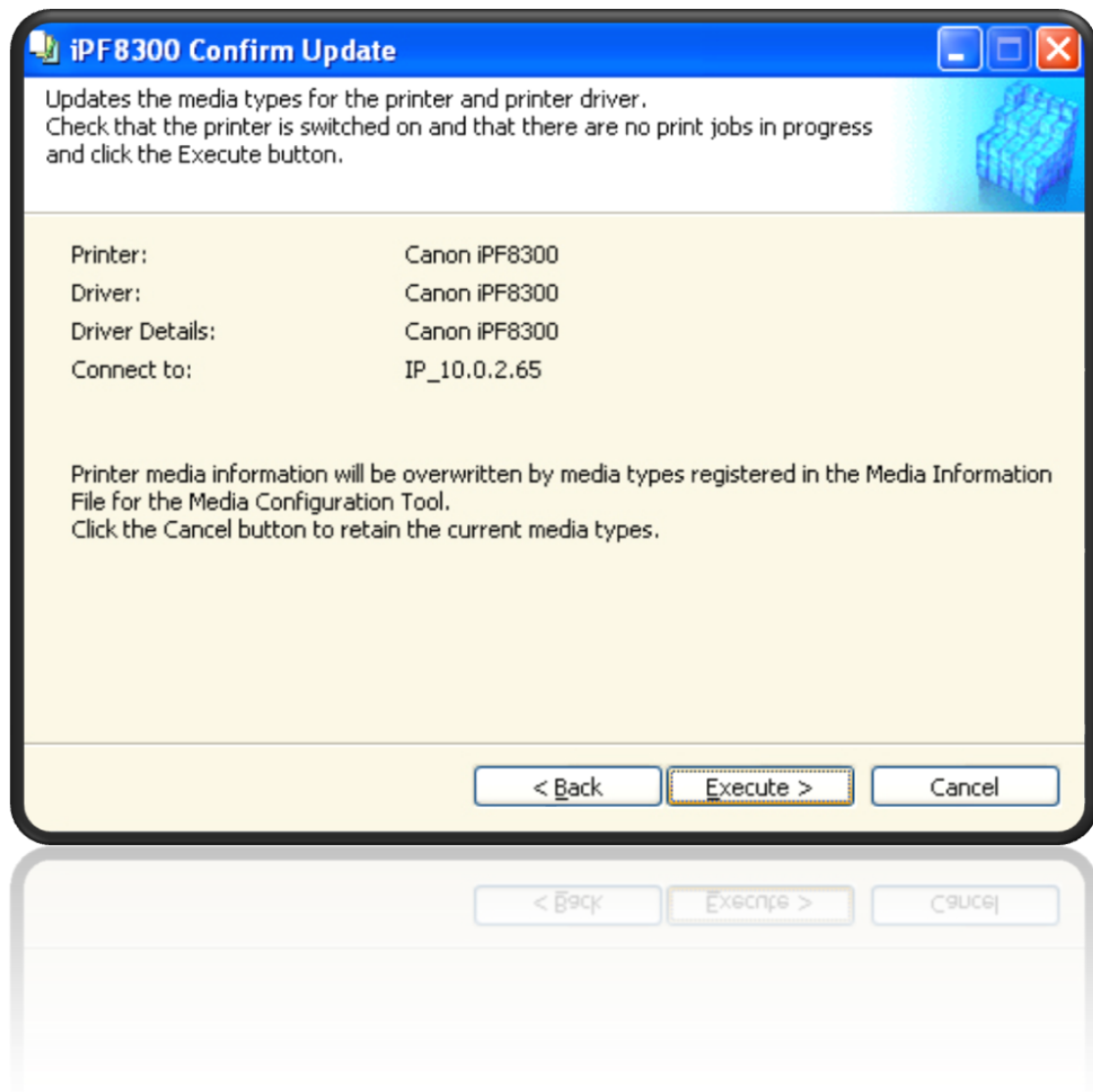
## Step 7

Confirm your selection by selecting “OK”.



## Step 8

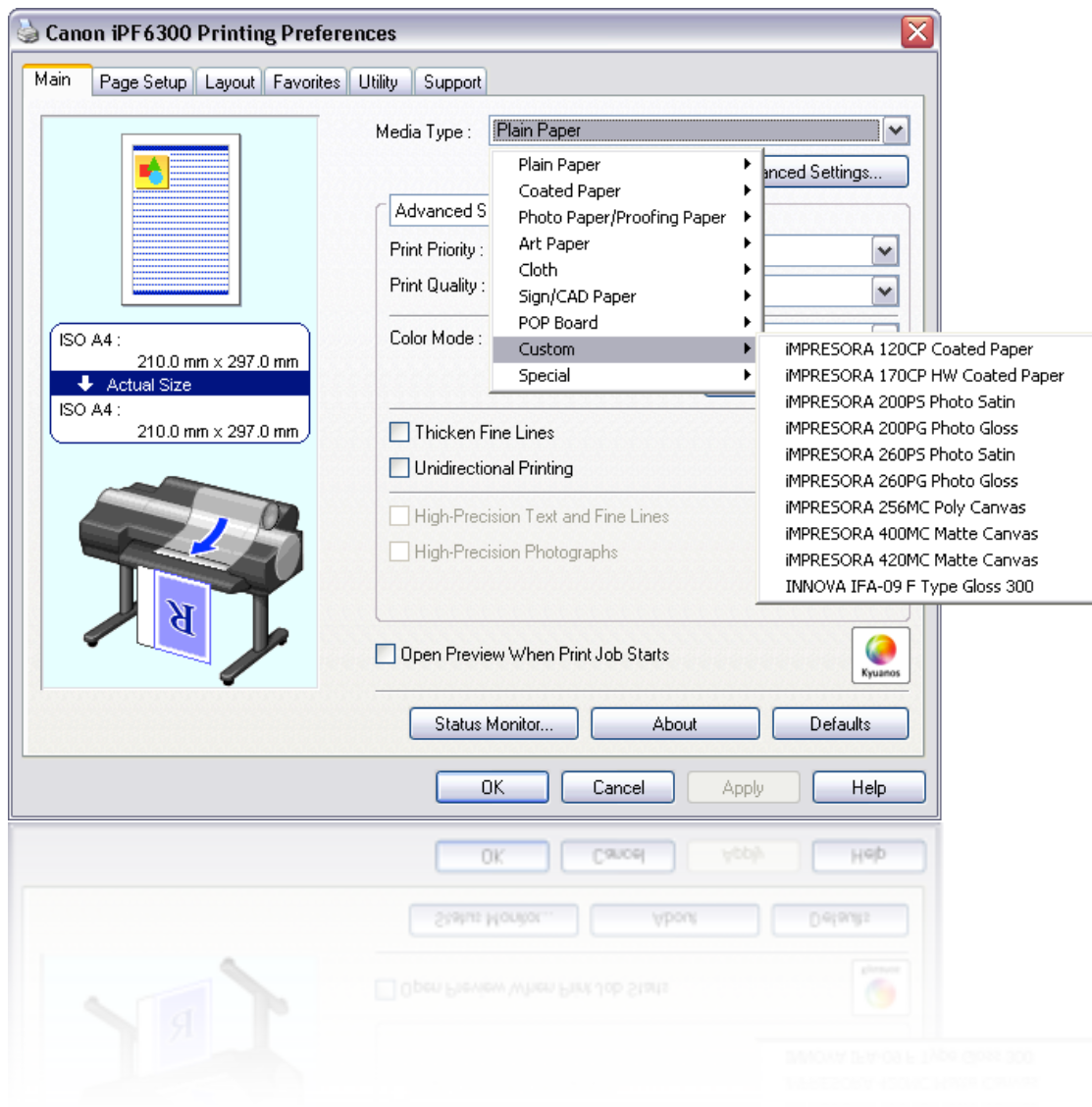
Select “**Execute**” and the printer will update with the new media type.





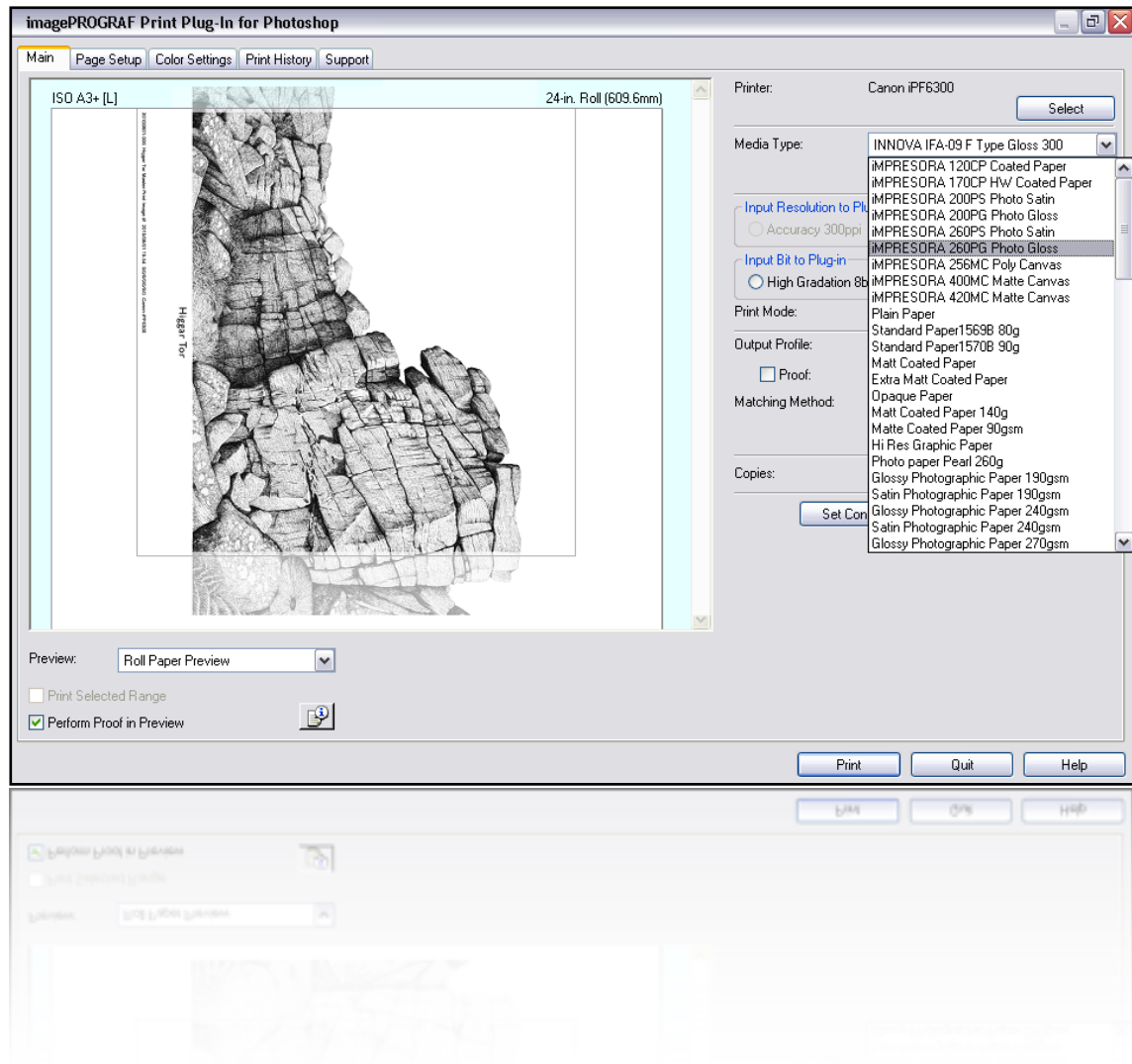
## How to select & use new profiles - Printer Driver

After the steps above are complete, the new profiles will be available to view in the printer driver by selecting **“Media Type”**, then **“Custom”**.



## How to select & use new profiles - Photoshop Plug-In

After the steps above are complete, the new profiles will be available to view in the Photoshop Plug-In by selecting “Media Type”.



## How to select & use new profiles - When loading a roll

After the steps above are complete and when loading a new roll, select **“Custom”** from the on screen display, then select your new custom profile.

